



# MODEL 4010™ TANK SCALE

## BASE SIZES AVAILABLE:

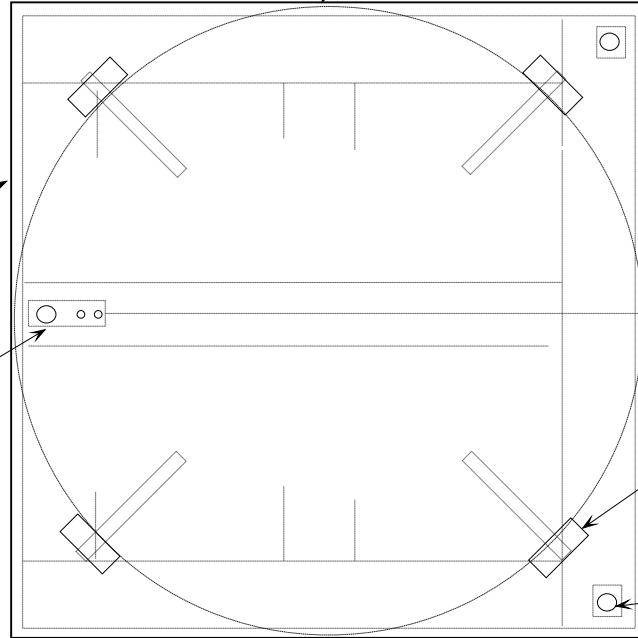
- 24" x 24" (610 mm)
- 30" x 30" (762 mm)
- 36" x 36" (914 mm)
- 48" x 48" (1219 mm)

## MAXIMUM TANK DIAMETER PER BASE SIZE:

- 24" X 24" =24" (610 mm)
- 30" X 30" =30" (762 mm)
- 36" X 36" =36" (914 mm)
- 48" X 48" =48" (1219 mm)

0.5" (13 mm) THICK PVC DECK

S.S. LOAD CELL WITH LEVELING FOOT



CONDUIT FITTING

TO INDICATOR

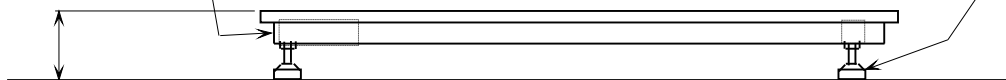
ADJUSTABLE TANK CENTERING STOPS

S.S. LEVELING FOOT TYPICAL (2) PLACES

### TOP VIEW

S.S. LOAD CELL WITH LEVELING FOOT

S.S. LEVELING FOOT TYPICAL (2) PLACES



3.5" (89 mm) FLOOR TO TOP OF DECK

### SIDE VIEW