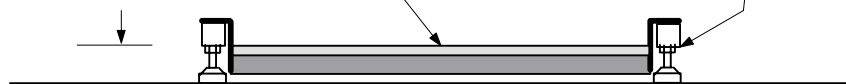


PLAN VIEW

1/2" (13 mm) THICK PVC DECK  
24" x 24" OR 30" x 30"  
(610 x 610 mm OR 762 x 762 mm)



END VIEW

STAINLESS STEEL LOAD CELL  
WITH LEVELING FOOT  
(4) PLACES

1 3/4" (44 mm) FLOOR  
TO TOP OF DECK

FINISH: DRY POWDER POLYESTER PLASTIC COATING.  
COLOR: CAUTION YELLOW

REV	DATE	DESCRIPTION	BY
<b>Scaletron™ Industries, Ltd.</b>			
MODEL 4041 ULTRA LOW PROFILE PLATFORM SCALE			
Dwn By: NCT		Rev.	Date: 11/29/01
Scale:		Drawing No. <b>SK 105</b>	
Approved:			