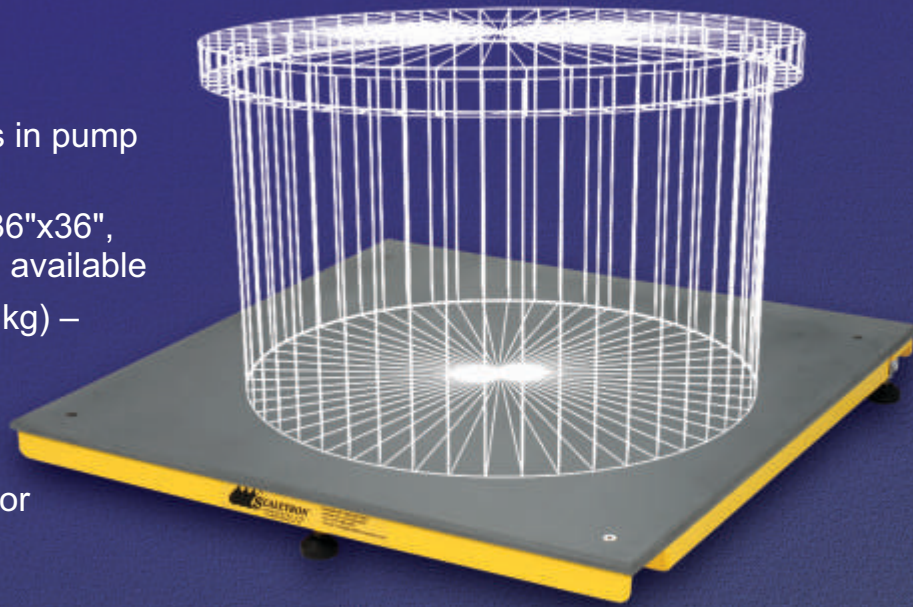




**Scaleton™  
Sets The Standard  
In Corrosion  
Resistance**

## Model 4030™ Digital Tank Scale

- Designed for off-centered tanks or drums in pump in/out applications
- Standard base sizes: 24"x24", 30"x30", 36"x36", 48"x48", 60"x60", 72"x72" – custom sizes available
- Gross capacity range: 0-5000 lbs. (2268 kg) – custom capacities available
- High accuracy of  $\pm 0.1\%$  of capacity
- Standard indicator: 3-1/2 digit LCD display with easy readability to 1 lb. (kg) or 0.1 lb. (kg)
- Readout in pounds or kilograms



3-1/2 Digit Indicator  
(Standard)



4-1/2 Digit Indicator  
(Optional)



1020™ 5 Digit  
Controller (Optional)



1099™ Chemical  
Process Controller (Optional)



### Standard Features

- Rugged steel construction protected by a corrosion resistant finish, with solid 1/2" PVC decking
- Accommodates off-center loads
- Electronic indicator housed in NEMA 4X, UL approved enclosure to provide protection from acids
- NTEP stainless steel temperature compensated load cell
- Self-locking tare adjustment knob
- 4-20 mA output signal – scale or loop powered
- 20 ft. of 4 conductor wire cable

### Options

- 240 VAC power (4-1/2 digit display)
- 4-1/2 digit display with active and passive 4-20 mA, 0-20 mA, and -8 to +12 mA, and two adjustable low level contacts
- Model 1020™ 5 digit controller with loop powered 4-20 mA, up to four adjustable set points and one or two channels
- Model 1099™ Chemical Process Controller
- Remote mounting of indicator box up to 200 feet (61 meters) away
- Junction box – Additional length of wire cable

### Chemicals

Scale is designed to accurately measure weight of alum, ammonia, caustic, fluoride, phosphate, polymers, sodium aluminate, sodium bisulfate, sodium hydroxide, sodium hypochlorite and other liquids or powders

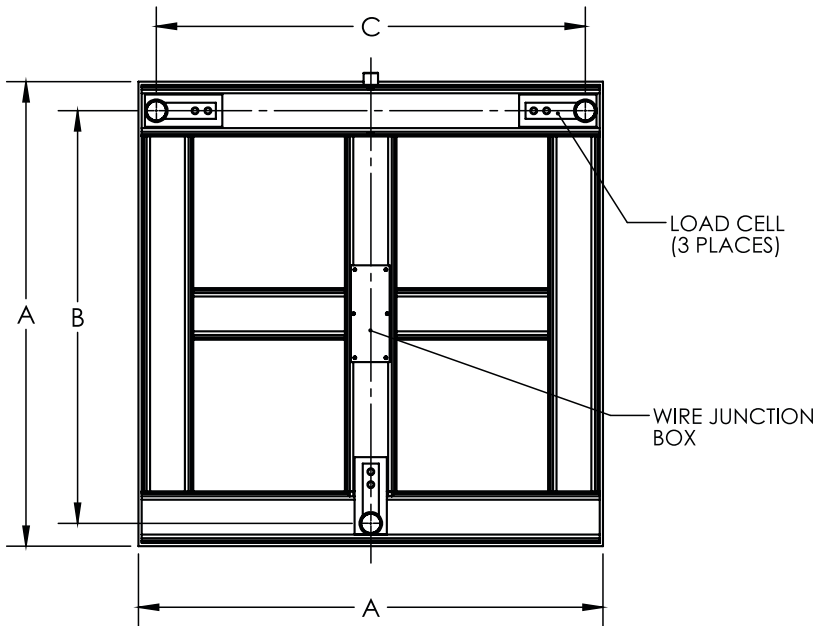
### Scaleton Industries Ltd.

Bedminster Industrial Park  
53 Apple Tree Lane • P.O. Box 365  
Plumsteadville, PA 18949 • USA

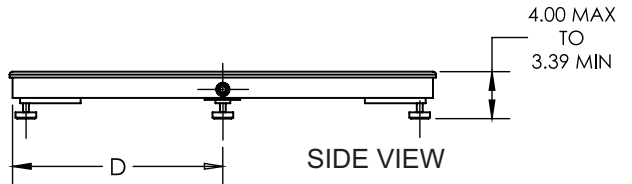
Tel: (+1) 215-766-2670 (International)  
Tel: (+1) 800-257-5911 (USA & Canada)  
Fax: (+1) 215-766-2672

Email: [info@scaletonscales.com](mailto:info@scaletonscales.com)  
Website: [www.scaletonscales.com](http://www.scaletonscales.com)

# Model 4030™ Digital Tank Scale General Specifications



BASE SIZE	"A"	"B"	"C"	"D"
24"	24"	19.5"	21.25"	11.75"
30"	30"	25.5"	27.25"	14.75"
36"	36"	31.5"	33.25"	17.75"
48"	Contact Factory			



Indicator/Controller:	3-1/2 Digit	4-1/2 Digit	1020™	1099™ C.P.C.
<b>Platform Size:</b>	24"x24", 30"x30", 36"x36", 48"x48", 60"x60", 72"x72" – custom sizes available			
<b>Platform Height:</b>	Bases 24", 30" & 36" - 3-1/2" (89 mm), bases 48" & larger - 5" (178 mm) – add 1/2" for bolt down feet			
<b>Gross Capacity:</b>	Up to 5000 lbs. (2268 kg) – custom capacities available (150% overload protection is provided)			
<b>Accuracy:</b>	0.5% of full capacity		0.1% - 0.25% full capacity	
<b>Resolution:</b>	0.1 up to 199.9, or 1.0 over 200 lbs. (kg)		0.1 up to 999.9, or 1.0 over 1000 lbs. (kg)	
<b>4-20 mA:</b>	Standard – scale or loop powered		Standard on Channel 1, Optional on Channel 2 – loop powered	Standard on Channel 1 – loop powered (available for Channels 2 thru 4)
<b>Level Indication/ Relay Contacts:</b>	Optional	(2) Standard	Optional – Up to 4 (as high or low) on one channel or more than one per channel for a total of 4 set points with relay contract	
<b>Power:</b>	85 VAC to 265 VAC	120VAC, 50/60 Hz, 0.3A 240VAC, 50/60Hz, 0.15A	85VAC to 265VAC	
<b>Enclosure:</b>	NEMA 4X, UL Approved Enclosure			
<b>Shipping Weight:</b>	24"x24" = 130 lbs.; 30"x30" = 150 lbs.; 36"x36" = 160 lbs.; 48"x48" = 240 lbs.			

## Typical Specifications

The Digital Tank Scale must have rugged steel frame that is zinc oxide primed and dry powder epoxy coated. The decking shall be solid, 1/2 inch thick PVC. All hardware shall be stainless steel. The height shall not exceed 3.5 inches (5 inches on 48" & larger bases) so as not to require a pit or ramp. Stainless steel leveling feet shall be supplied with 3 NTEP approved stainless steel shear beam cells.

Scale shall be a Model 4030™ as manufactured by Scaleton Industries Ltd., Plumsteadville, PA.

**5 year FULL warranty  
on ALL products!**

### STANDARD INDICATOR:

3-1/2 Digit LCD Indicator: Indicator must be electronic with digital display with characters 0.5 inches high, with 0.1 lb. or 0.1 kg resolution and housed in a NEMA 4X, UL approved enclosure. Indicator is required to have 4-20 mA output selectable as scale powered or loop powered, standard. Indicator must have a knob to set tare weight. Accuracy is 0.5% of full scale, or better.

### OPTIONAL INDICATORS/CONTROLLERS:

4-1/2 Digit LED Indicator: Indicator must be electronic with digital display with characters 0.56 inches high and housed in a NEMA 4X, UL approved enclosure. An output of 4-20 mA, 0-20 mA, or -8 to + 12 mA, selectable as scale or loop powered to provide versatility to interface with related equipment, must be standard equipment. Indicator comes with two low level relay contacts, standard. A knob to set tare weights is required. Indicator must be capable of 0.1 lb. or 0.1 kg up to 1000.0 lbs. or kg. Accuracy is 0.5% of full scale, or better.

Model 1020™ 5 Digit Controller: Controller must be electronic with a two line, backlit alphanumeric digital display and housed in a NEMA 4X, UL approved enclosure. Available as single or dual channel and capable of displaying two channels simultaneously. A loop powered programmable output of 4-20 mA and four set points per channel must be standard equipment. Indicator must be capable of 0.1 lb. or 0.1 kg up to 5000 lbs. or 2268 kg. Accuracy is 0.25% of full scale, or better.

Model 1099™ Chemical Process Controller see separate specification.