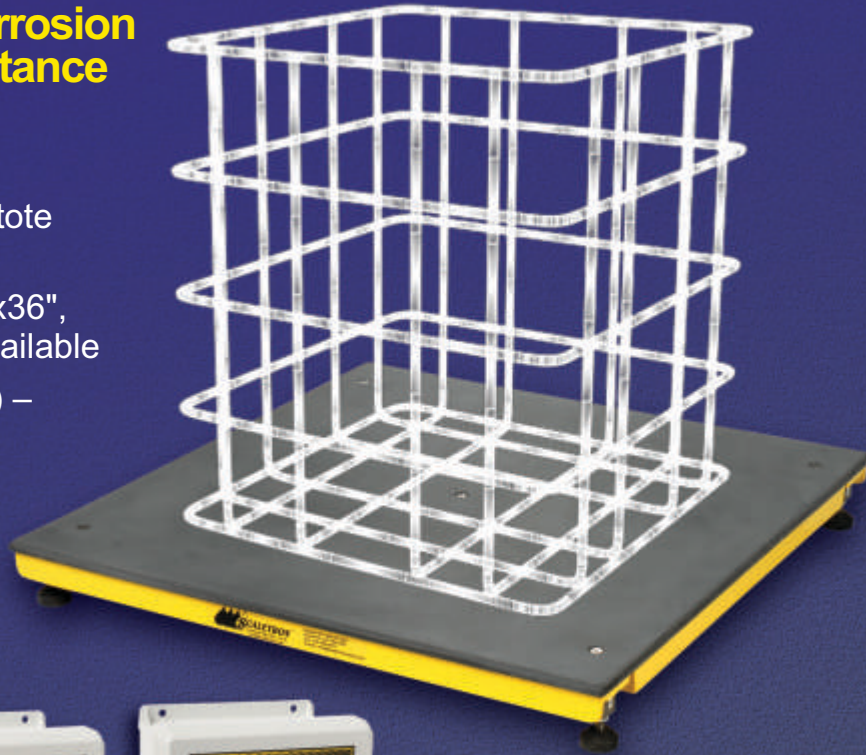




**Scaleton™
Sets The Standard
In Corrosion
Resistance**

Model 4040 IBC™ Tote Bin Scale

- Designed for frequent on and off loading of tote bins and carboys
- Standard base sizes: 24"x24", 30"x30", 36"x36", 48"x48", 60"x60", 72"x72" – custom sizes available
- Gross capacity range: 0-5000 lbs. (2268 kg) – custom capacities available
- High accuracy of $\pm 0.1\%$ of capacity
- Standard indicator: 3-1/2 digit LCD display with easy readability to 1 lb. (kg) or 0.1 lb. (kg)
- Readout in pounds or kilograms



3-1/2 Digit Controller
(Standard)



4-1/2 Digit Controller
(Optional)



1020 5 Digit
Controller (Optional)



1099 Chemical
Process Controller (Optional)



Standard Features

- Rugged steel construction protected by a corrosion resistant finish, with solid 1/2" PVC decking
- Accommodates off-center loads
- Electronic indicator housed in NEMA 4X, UL approved enclosure to provide protection from acids
- NTEP stainless steel temperature compensated load cell
- Self-locking tare adjustment knob
- 4-20 mA output signal – scale or loop powered
- 20 ft. of 4 conductor wire cable

Options

- 240 VAC power (4-1/2 digit display)
- 4-1/2 digit display with active and passive 4-20 mA, 0-20 mA, and -8 to +12 mA, and two adjustable low level contacts
- Model 1020™ 5 digit controller with loop powered 4-20 mA, up to four adjustable set points and one or two channels
- Model 1099™ Chemical Process Controller
- Remote mounting of indicator box up to 200 feet (61 meters) away
- Junction box – Additional length of wire cable

Chemicals

Scale is designed to accurately measure weight of alum, ammonia, caustic, fluoride, phosphate, polymers, sodium aluminate, sodium bisulfate, sodium hydroxide, sodium hypochlorite and other liquids or powders

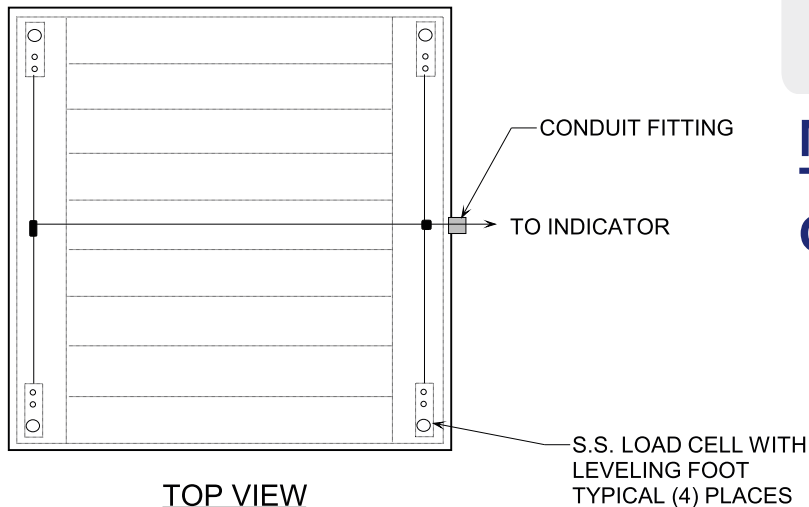
Scaleton Industries Ltd.

Bedminster Industrial Park
53 Apple Tree Lane • P.O. Box 365
Plumsteadville, PA 18949 • USA

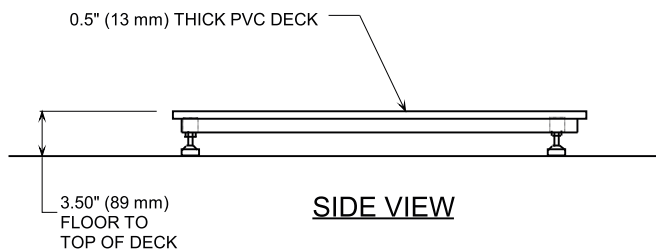
Tel: (+1) 215-766-2670 (International)
Tel: (+1) 800-257-5911 (USA & Canada)
Fax: (+1) 215-766-2672

Email: info@scaletonscales.com
Website: www.scaletonscales.com

BASE SIZES AVAILABLE:
 24" X 24" (610 X 610 mm) OR
 30" x 30" (762 x 762 mm) OR
 36" x 36" (914 x 914 mm) OR
 48" x 48" (1219 x 1219 mm)



Model 4040 IBC™ Tote Bin Scale General Specifications



Indicator:	3-1/2 Digit	4-1/2 Digit	1020™	1099™ C.P.C.
Platform Size:	24"x24", 30"x30", 36"x36", 48"x48", 60"x60", 72"x72" – custom sizes available			
Platform Height:	3-1/2" (89 mm)			
Gross Capacity:	Up to 5000 lbs. (2268 kg) – custom capacities available (150% overload protection is provided)			
Accuracy:	0.5% of full capacity		0.1% - 0.25% full capacity	
Resolution:	0.1 up to 199.9, or 1.0 over 200 lbs. (kg)		0.1 up to 999.9, or 1.0 over 1000 lbs. (kg)	
4-20 mA:	Standard – scale or loop powered		Standard on Channel 1, Optional on Channel 2 – loop powered	Standard on Channel 1 – loop powered (available for Channels 2 thru 4)
Level Indication/ Relay Contacts:	Optional	(2) Standard	Optional – Up to 4 (as high or low) on one channel or more than one per channel for a total of 4 set points with relay contract	
Power:	85 VAC to 265 VAC	120VAC, 50/60 Hz, 0.3A 240VAC, 50/60Hz, 0.15A	85VAC to 265VAC	
Enclosure:	NEMA 4X, UL Approved Enclosure			
Shipping Weight:	24"x24" = 130 lbs.; 30"x30" = 150 lbs.; 36"x36" = 160 lbs.; 48"x48" = 240 lbs.			

Typical Specifications

The IBC Tote Bin Scale must have rugged steel frame that is zinc oxide primed and dry powder epoxy coated. The decking shall be solid, 1/2 inch thick PVC. All hardware shall be stainless steel. The height shall not exceed 3.5 inches so as not to require a pit or ramp. Stainless steel leveling feet shall be supplied with 4 NTEP approved stainless steel shear beam cells. A four cell system is required for accurate reading so that off center loads may be placed anywhere on the base and still obtain an accurate reading.

Scale shall be a Model 4040 IBC™ as manufactured by Scaleton Industries Ltd., Plumsteadville, PA.

**5 year FULL warranty
on ALL products!**

STANDARD INDICATOR:

3-1/2 Digit LCD Indicator: Indicator must be electronic with digital display with characters 0.5 inches high, with 0.1 lb. or 0.1 kg resolution and housed in a NEMA 4X, UL approved enclosure. Indicator is required to have 4-20 mA output selectable as scale powered or loop powered, standard. Indicator must have a knob to set tare weight. Accuracy is 0.5% of full scale, or better.

OPTIONAL INDICATORS:

4-1/2 Digit LED indicator: Indicator must be electronic with digital display with characters 0.56 inches high and housed in a NEMA 4X, UL approved enclosure. An output of 4-20 mA, 0-20 mA, or -8 to + 12 mA, selectable as scale or loop powered to provide versatility to interface with related equipment, must be standard equipment. Indicator comes with two low level relay contacts, standard. A knob to set tare weights is required. Indicator must be capable of 0.1 lb. or 0.1 kg up to 1000.0 lbs. or kg. Accuracy is 0.5% of full scale, or better.

Model 1020™ 5 Digit Controller: Controller must be electronic with a two line, backlit alphanumeric digital display and housed in a NEMA 4X, UL approved enclosure. Available as single or dual channel and capable of displaying two channels simultaneously. A loop powered programmable output of 4-20 mA and four set points per channel must be standard equipment. Indicator must be capable of 0.1 lb. or 0.1 kg up to 5000 lbs. or 2268 kg. Accuracy is 0.25% of full scale, or better.

Model 1099™ Chemical Process Controller see separate specification.