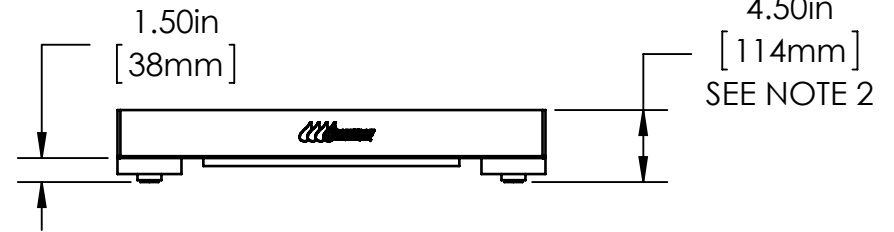
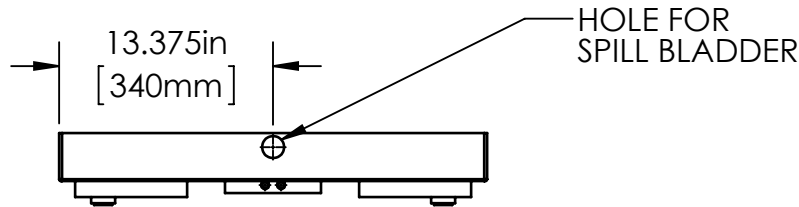
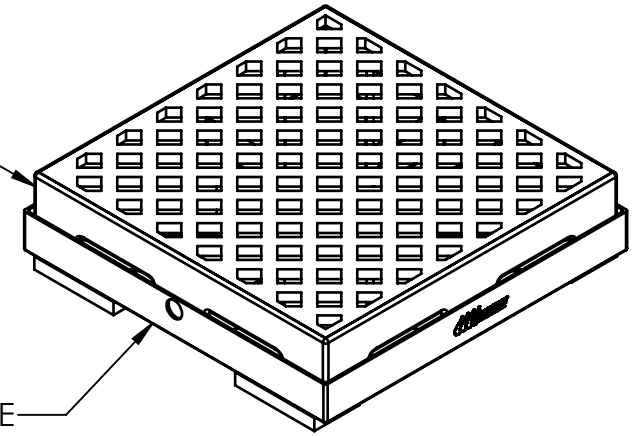
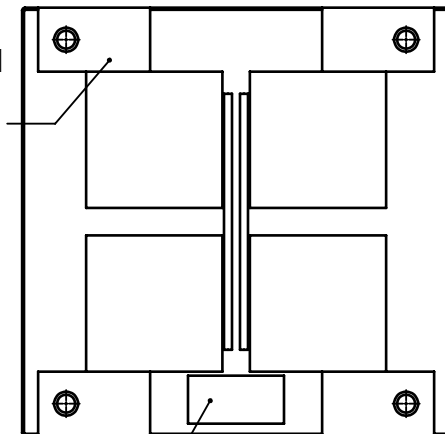


SPILL
CONTAINMENT
BASIN

SCALE BASE




CONTAINED
LOAD CELL WITH
STAINLESS FEET
(4 PLACES)



WIRE JUNCTION BOX
SEE NOTE 1

- NOTES: UNLESS OTHERWISE SPECIFIED
1. INCLUDES 20FT [6.1m] OF 4 CONDUCTOR WIRE
 2. HEIGHT WITH SPILL CONTAINMENT BASIN IS APPROXIMATELY 7.5" [191mm]

UNLESS OTHERWISE SPECIFIED: DIMENSIONS ARE IN INCHES	PROPRIETARY AND CONFIDENTIAL THE INFORMATION CONTAINED IN THIS DRAWING IS THE SOLE PROPERTY OF SCALETRON INDUSTRIES LTD. ANY REPRODUCTION IN PART OR AS A WHOLE WITHOUT THE WRITTEN PERMISSION OF SCALETRON INDUSTRIES LTD IS PROHIBITED.					
	TITLE: MODEL 4042 26 INCH SPILL CONTAINMENT SCALE					
TOLERANCES: FRACTIONAL ±1/32" ANGULAR: MACH ±1° BEND ±1° TWO PLACE DECIMAL ±.01 THREE PLACE DECIMAL ±.005	MATERIAL	NAME	DATE	SIZE	DWG. NO.	REV
	DRAWN	JMS	1/04/17	A	SI-4042-26-C-001	-
	FINISH	ENG APPR.		SCALE: 1:12		SHEET 1 OF 1
DO NOT SCALE DRAWING	Q.A.					