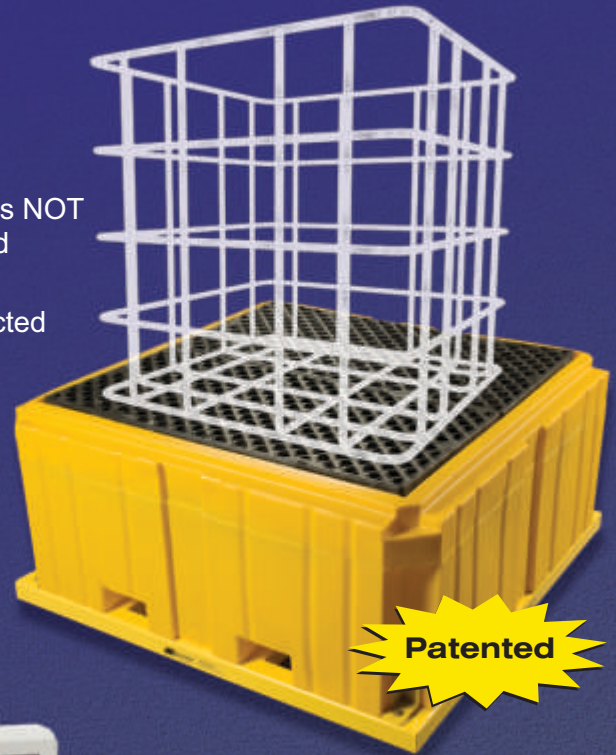




**Scaleton™
Sets The Standard
In Corrosion
Resistance**

Model 4042-63 IBC™ Spill Containment IBC Tote Scale

- Accurately displays the weight of the net remaining chemical that has NOT been dispensed into the water treatment system, while splashes and small spills are contained within the basin
- Splashes and small spills DO NOT appear as if they have been injected into the water treatment system
- Meets secondary spill containment requirements by the EPA, OSHA, and other local agencies
- Standard base sizes w/out bladder 63"x63" - other sizes available
- Gross capacity range 0-8500 lbs. (3856 kg) - other capacities available
- High accuracy of $\pm 0.1\%$ to 0.5%
- Standard indicator: 3-1/2 digit LCD display with easy readability to 1lb. (kg), 0.1lb (kg)



4-1/2 Digit Indicator
(Standard)



1020™ 5 Digit
Controller (Optional)



1099™ Chemical
Process Controller (Optional)



Standard Features

- Rugged steel construction protected by corrosion resistant finish, with polyethylene containment basin
- Four load cell design means the load can be placed anywhere on the containment platform and does not need to be leveled
- Electronic indicator housed in NEMA 4X, UL approved enclosure to provide protection from acids
- Load cells are mounted outside of spill containment basin to eliminate damage due to chemical spills.
- Self-locking tare adjustment knob
- 4-20 mA output – scale or loop powered
- 2 Low level alarm relay controls
- 20 ft. of 4 conductor wire cable

Options

- 240 VAC power (4-1/2 digit display)
- 4-1/2 digit display with active and passive 4-20 mA, 0-20 mA, and -8 to +12 mA, and two adjustable low level contacts
- Model 1099™ Chemical Process Controller
- Remote mounting of indicator box up to 200 feet (61 meters) away
- Junction box – Additional length of wire cable

Chemicals

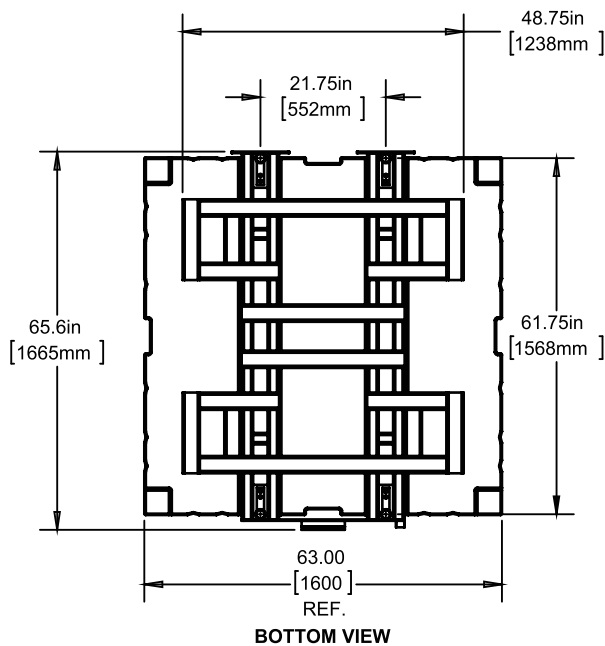
Scale is designed to accurately measure weight of alum, ammonia, caustic, fluoride, phosphate, polymers, sodium aluminate, sodium bisulfate, sodium hydroxide, sodium hypochlorite and other liquids or powders

Scaleton Industries Ltd.

Bedminster Industrial Park
53 Apple Tree Lane • P.O. Box 365
Plumsteadville, PA 18949 • USA

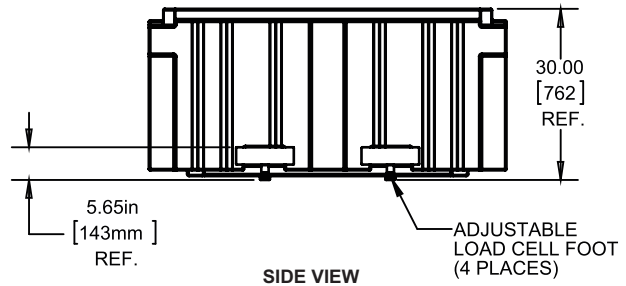
Tel: (+1) 215-766-2670 (International)
Tel: (+1) 800-257-5911 (USA & Canada)
Fax: (+1) 215-766-2672

Email: info@scaletonscales.com
Website: www.scaletonscales.com



BOTTOM VIEW

Model 4042-63 IBC™ Spill Containment IBC Tote Scale General Specifications



SIDE VIEW

Indicator/Controller:	4-1/2 Digit	1020™	1099™ C.P.C.
Platform Size & (Containment Capacities):	63"x63" (300 gal.) – other sizes available		
Platform Height:	3-1/2 inch high (88.0mm)		
Gross Capacity:	Up to 8500 lbs. (3856 kg) – other capacities available (150% overload protection is provided)		
Accuracy:	0.5% of full capacity	.01%-0.25% full capacity	
Resolution:	0.1 up to 999.9, or 1.0 over 1000 lbs. (kg)		
4-20 mA:	Standard – scale or loop powered	Standard on Channel 1, Optional on Channel 2 – loop powered	Standard on Channel 1 – loop powered (available for Channels 2 thru 4)
Level Indication/ Relay Contacts:	(2) Standard	Optional – Up to 4 (as high or low) on one channel or more than one per channel for a total of 4 set points with relay contract	
Power:	120VAC, 50/60 Hz, 0.3A 240VAC, 50/60Hz, 0.15A	85VAC to 265VAC	
Enclosure:	NEMA 4X, UL Approved Enclosure		
Shipping Weight:	570 lbs		

Typical Specifications

The Spill Containment IBC Tote Scale must have rugged steel frame that is zinc oxide primed and dry powder epoxy coated. The integral containment deck and basin shall be solid polyethylene. All hardware must be stainless steel. Scale frame height shall not exceed 5.65". Total height with containment deck shall not exceed 30.0". Scale must have four (4) NTEP stainless steel shear beam load cells with stainless steel leveling feet. All 4 load cells shall be located outside the chemical containment basin to eliminate damage due to chemical spills.

Scale shall be a Model 4042-63 IBC™ as manufactured by Scaletron Industries Ltd., Plumsteadville, PA.

5 year FULL warranty on ALL products!

STANDARD INDICATOR:

4-1/2 Digit LED Indicator: Indicator must be electronic with digital display with characters 0.56 inches high and housed in a NEMA 4X, UL approved enclosure. An output of 4-20 mA, 0-20 mA, or -8 to + 12 mA, selectable as scale or loop powered to provide versatility to interface with related equipment, must be standard equipment. Indicator comes with two low level relay contacts, standard. A knob to set tare weights is required. Indicator must be capable of 0.1 lb. or 0.1 kg up to 1000.0 lbs. or kg. Accuracy is 0.5% of full scale, or better.

OPTIONAL CONTROLLERS:

Model 1020™ 5 Digit Controller: Controller must be electronic with a two line, backlit alphanumeric digital display and housed in a NEMA 4X, UL approved enclosure. Available as single or dual channel and capable of displaying two channels simultaneously. A loop powered programmable output of 4-20 mA and four set points per channel must be standard equipment. Indicator must be capable of 0.1 lb. or 0.1 kg up to 8500 lbs. or 3856 kg. Accuracy is 0.25% of full scale, or better.

Model 1099™ Chemical Process Controller see separate specification.