



**Scaleton™
Sets The Standard
In Corrosion
Resistance**

Model 4042-63 IBC-WE™ IBC Spill Containment Scale with Weatherproof Enclosure

- Safely and securely protect outside IBCs from the weather and unauthorized access
- Weighs and stores an IBC tank with maximum dimensions of 52" x 52" x 61"
- Meets EPA Container Storage Regulation 40 CFR 264.175 and Stormwater Management Regulations - NPDES, 40 CFR 122.26
- Meets secondary spill containment requirements by the EPA, OSHA, and other local agencies
- Overall size: 64.5"L x 62"W x 96"H
- Gross capacity range 0-8500 lbs. (3856 kgs) - other capacities available
- High accuracy of ±0.1% to 0.5%
- Standard indicator: 3-1/2 digit LCD display with easy readability to 1 lb. (kg), 0.1lb (kg)



Patented



4-1/2 Digit Indicator
(Standard)



1020™ 5 Digit
Controller (Optional)



1099™ Chemical
Process Controller (Optional)



Standard Features

- Chemical resistant, all-polyethylene weatherproof storage enclosure and spill containment basin
- Upper roll-top door and lower swing-out doors allow easy and convenient access to IBC totes
- Scale base features rugged steel construction protected by corrosion resistant finish
- Four load cell design means the load can be placed anywhere on the containment platform
- Electronic indicator housed in NEMA 4X, UL approved enclosure provides protection from acids
- Self-locking tare adjustment knob
- 4-20 mA output – scale or loop powered
- 2 Low level alarm relay contacts
- 20 ft. of 4 conductor wire cable

Options

- 240 VAC power (4-1/2 digit display)
- Model 1020™ 5 digit controller with loop powered 4-20 mA, up to four adjustable set points and one or two channels
- Model 1099™ Chemical Process Controller
- Remote mounting of indicator box up to 200 feet (61 meters) away
- Junction box - Additional length of wire cable

Chemicals

Scale is designed to accurately measure weight of alum, ammonia, caustic, fluoride, phosphate, polymers, sodium aluminate, sodium bisulfate, sodium hydroxide, sodium hypochlorite and other liquids or powders

Scaleton Industries Ltd.

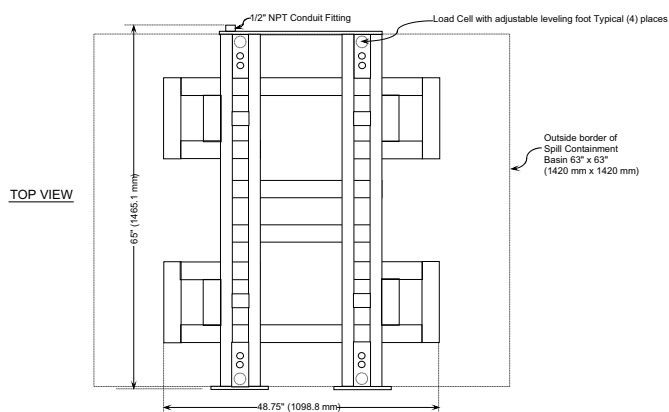
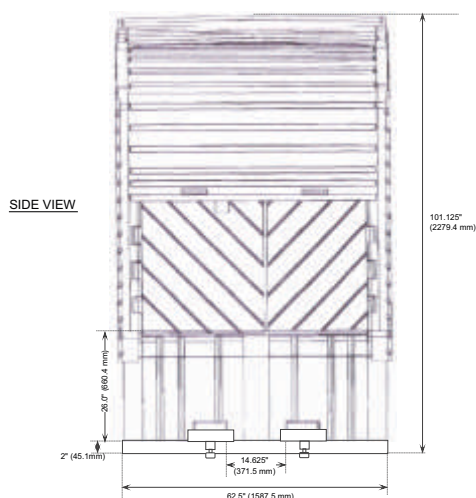
Bedminster Industrial Park
53 Apple Tree Lane • P.O. Box 365
Plumsteadville, PA 18949 • USA

Tel: (+1) 215-766-2670 (International)
Tel: (+1) 800-257-5911 (USA & Canada)
Fax: (+1) 215-766-2672

Email: info@scaletonscales.com
Website: www.scaletonscales.com

Model 4042-63 IBC-WE™

Spill Containment IBC Tote Scale with Weatherproof Enclosure General Specifications



Indicator/Controller:	4-1/2 Digit	1020™	1099™ C.P.C.
Overall Size	64.5"L x 62"W x 96"H		
Platform Size & (Containment Capacities):	63" x 63" (360 gal.)		
Platform Height:	30.3" inch high (762mm)		
Gross Capacity:	Up to 8500 lbs. (3856 kg)		
Accuracy:	0.5% of full capacity	.01%-0.25% full capacity	
Resolution:	0.1 up to 999.9, or 1.0 over 1000 lbs. (kg)		
4-20 mA:	Standard – scale or loop powered	Standard on Channel 1, Optional on Channel 2 – loop powered	Standard on Channel 1 – loop powered (available for Channels 2 thru 4)
Level Indication/ Relay Contacts:	(2) Standard	Optional – Up to 4 (as high or low) on one channel or more than one per channel for a total of 4 set points with relay contract	
Power:	120VAC, 50/60 Hz, 0.3A 240VAC, 50/60Hz, 0.15A	85VAC to 265VAC	
Enclosure:	NEMA 4X, UL Approved Enclosure		
Shipping Weight:	570 lbs		

Typical Specifications

The Spill Containment IBC Tote Scale with Weatherproof Enclosure must have a chemical resistant, all-polyethylene weatherproof IBC storage enclosure. Enclosure must have upper roll-top door and lower swing-out doors allow easy and convenient access to IBC totes. Scale must have rugged steel frame that is zinc oxide primed and dry powder epoxy coated. The integral containment deck and basin shall be solid polyethylene. All hardware must be stainless steel. Scale frame height shall not exceed 5.65". Total height to top of containment deck shall not exceed 30.0". Scale must have four (4) NTEP stainless steel shear beam load cells with stainless steel leveling feet. Load cells shall be located outside the chemical containment basin to eliminate damage due to chemical spills.

Scale shall be a Model 4042-63 IBC-WE™ as manufactured by Scaleton Industries Ltd., Plumsteadville, PA.

CE 5 year FULL warranty on ALL products!

STANDARD INDICATOR:

4-1/2 Digit LED Indicator: Indicator must be electronic with digital display with characters 0.56 inches high and housed in a NEMA 4X, UL approved enclosure. An output of 4-20 mA, 0-20 mA, or -8 to + 12 mA, selectable as scale or loop powered to provide versatility to interface with related equipment, must be standard equipment. Indicator comes with two low level relay contacts, standard. A knob to set tare weights is required. Indicator must be capable of 0.1 lb. or 0.1 kg up to 1000.0 lbs. or kg. Accuracy is 0.5% of full scale, or better.

OPTIONAL CONTROLLERS:

Model 1020™ 5 Digit Controller: Controller must be electronic with a two line, backlit alphanumeric digital display and housed in a NEMA 4X, UL approved enclosure. Available as single or dual channel and capable of displaying two channels simultaneously. A loop powered programmable output of 4-20 mA and four set points per channel must be standard equipment. Indicator must be capable of 0.1 lb. or 0.1 kg up to 8500 lbs. or 3856 kg. Accuracy is 0.25% of full scale, or better.

Model 1099™ Chemical Process Controller see separate specification.