



**Scaleton™**  
**Sets The Standard**  
**In Corrosion**  
**Resistance**

## Model 4042ECO-WB-26™ Economical Spill Containment Drum Scale w/Bladder

- Economical scale designed for weighing chemicals in water, waste water and chemical processing applications
- Splashes and small spills of hazardous chemicals are captured within the containment basin
- Meets secondary spill containment requirements by the EPA, OSHA, and other local agencies
- Standard base size 26"x24" (w/bladder) - other sizes available
- Gross capacity range 0-2000 lbs. (908 kg) - other capacities available
- High accuracy of  $\pm 0.1\%$  to 0.5%
- Standard indicator: 3-1/2 digit LCD display with easy readability to 1 lb. (kg), 0.1lb (kg)



3-1/2 Digit Indicator  
(Standard)

4-1/2 Digit Indicator  
(Optional)

1020™ 5 Digit  
Controller (Optional)

1099™ Chemical  
Process Controller (Optional)



### Standard Features

- Rugged steel construction protected by corrosion resistant finish, with polyethylene containment basin
- Heavy-duty steel backstop to help center the drum
- Hinged base can be lifted for easy access and cleaning of the basin
- Electronic indicator housed in NEMA 4X, UL approved enclosure to provide protection from acids
- Load cells are mounted outside of spill containment basin to eliminate damage due to chemical spills.
- Self-locking tare adjustment knob
- 4-20 mA output – scale or loop powered
- 20 ft. of 4 conductor wire cable

### Options

- 240 VAC power (4-1/2 digit display)
- 4-1/2 digit display with active and passive 4-20 mA, 0-20 mA, and -8 to +12 mA, and two adjustable low level contacts
- Model 1020™ 5 digit controller with loop powered 4-20 mA, up to four adjustable set points and one or two channels
- Model 1099™ Chemical Process Controller
- Remote mounting of indicator box up to 200 feet (61 meters) away
- Junction box – Additional length of wire cable

### Chemicals

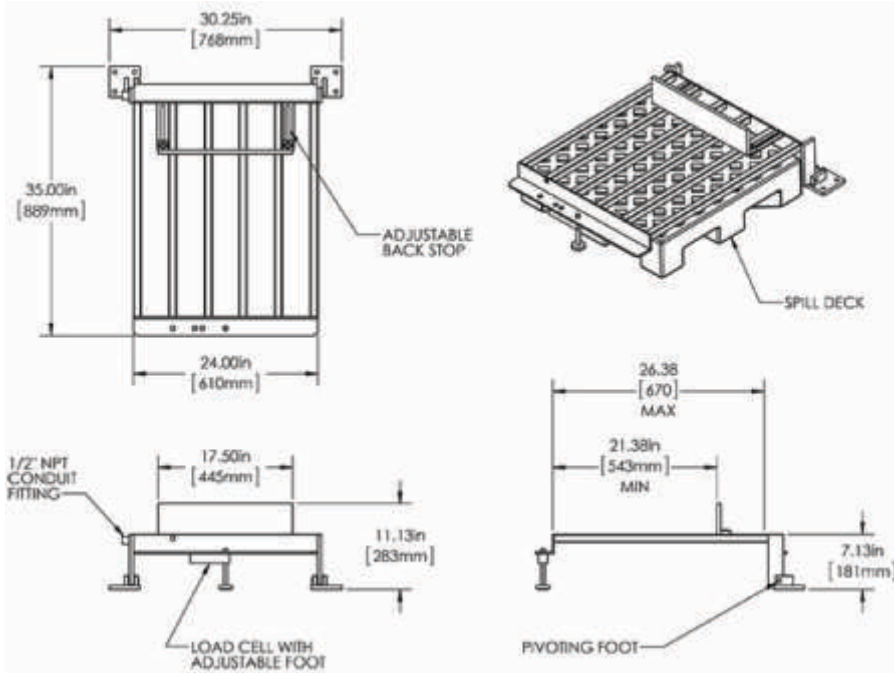
Scale is designed to accurately measure weight of alum, ammonia, caustic, fluoride, phosphate, polymers, sodium aluminate, sodium bisulfate, sodium hydroxide, sodium hypochlorite and other liquids or powders

### Scaleton Industries Ltd.

Bedminster Industrial Park  
53 Apple Tree Lane • P.O. Box 365  
Plumsteadville, PA 18949 • USA

Tel: (+1) 215-766-2670 (International)  
Tel: (+1) 800-257-5911 (USA & Canada)  
Fax: (+1) 215-766-2672

Email: [info@scaletonscales.com](mailto:info@scaletonscales.com)  
Website: [www.scaletonscales.com](http://www.scaletonscales.com)



## Model 4042ECO-WB-26™ Economical Spill Containment Drum Scale w/Bladder General Specifications

Indicator/Controller:	3-1/2 Digit	4-1/2 Digit	1020™	1099™ C.P.C.
<b>Platform Size &amp; (Containment Capacities):</b>	26"x24" (11 gal.) — (77 gal. total with deployed bladder) – other sizes available			
<b>Platform Height:</b>	7.13" (181.5 mm)			
<b>Gross Capacity:</b>	Up to 2000 lbs. (908 kg) – other capacities available (150% overload protection is provided)			
<b>Accuracy:</b>	0.5% of full capacity		.01%-0.25% full capacity	
<b>Resolution:</b>	0.1 up to 199.9, or 1.0 over 200 lbs. (kg)		0.1 up to 999.9, or 1.0 over 1000 lbs. (kg)	
<b>4-20 mA:</b>	Standard – scale or loop powered		Standard on Channel 1, Optional on Channel 2 – loop powered	Standard on Channel 1 – loop powered (available for Channels 2 thru 4)
<b>Level Indication/ Relay Contacts:</b>	Optional	(2) Standard	Optional – Up to 4 (as high or low) on one channel or more than one per channel for a total of 4 set points with relay contract	
<b>Power:</b>	85 VAC to 265 VAC	120VAC, 50/60 Hz, 0.3A 240VAC, 50/60Hz, 0.15A	85VAC to 265VAC	
<b>Enclosure:</b>	NEMA 4X, UL Approved Enclosure			
<b>Shipping Weight:</b>	96 lbs			

### Typical Specifications

The Economical Spill Containment Scale with Bladder must have rugged steel frame and deck that is zinc oxide primed and dry powder epoxy coated. The integral containment basin shall be solid polyethylene. There must be an expandable bladder to provide additional containment capacity if there is a major spill. All hardware must be stainless steel. Height of scale platform shall not exceed 7.13". Scale must have an NTEP stainless steel shear beam load cell with stainless steel leveling foot. Load cell shall be located outside the chemical containment basin to eliminate damage due to chemical spills.

Scale shall be a Model 4042ECO-WB-26™ as manufactured by Scaleton Industries Ltd., Plumsteadville, PA.

**CE** 5 year **FULL warranty**  
on **ALL products!**

#### STANDARD INDICATOR:

3-1/2 Digit LCD Indicator: Indicator must be electronic with digital display with characters 0.5 inches high, with 0.1 lb. or 0.1 kg resolution and housed in a NEMA 4X, UL approved enclosure. Indicator is required to have 4-20 mA output selectable as scale powered or loop powered, standard. Indicator must have a knob to set tare weight. Accuracy is 0.5% of full scale, or better.

#### OPTIONAL INDICATORS/CONTROLLERS:

4-1/2 Digit LED Indicator: Indicator must be electronic with digital display with characters 0.56 inches high and housed in a NEMA 4X, UL approved enclosure. An output of 4-20 mA, 0-20 mA, or -8 to + 12 mA, selectable as scale or loop powered to provide versatility to interface with related equipment, must be standard equipment. Indicator comes with two low level relay contacts, standard. A knob to set tare weights is required. Indicator must be capable of 0.1 lb. or 0.1 kg up to 1000.0 lbs. or kg. Accuracy is 0.5% of full scale, or better.

Model 1020™ 5 Digit Controller: Controller must be electronic with a two line, backlit alphanumeric digital display and housed in a NEMA 4X, UL approved enclosure. Available as single or dual channel and capable of displaying two channels simultaneously. A loop powered programmable output of 4-20 mA and four set points per channel must be standard equipment. Indicator must be capable of 0.1 lb. or 0.1 kg up to 1500 lbs. or 680 kg. Accuracy is 0.25% of full scale, or better.

Model 1099™ Chemical Process Controller see separate specification.