



SCALETRON™ SETS THE STANDARD  
IN CORROSION RESISTANCE™

## Model VMF-90C™ Economical Volumetric Screw Feeder

- Automatic metering screw feed system for mixing and dispensing dry powdered or pelletized material into a secondary process
- Ideal for water, wastewater and chemical processing applications
- Heavy-duty, gear-driven auger for metering mechanism
- Built-in hopper capacity of 1.5 cu. ft.
- Feed rate 0.13 to 1.27 cu. ft. per hour
- Accuracy of within 1.0% of volume



### Economical Automatic Metering Screw Feed System for Mixing and Dispensing Dry Powders into a Secondary Process

The Model VMF-90C Volumetric Screw Feeder has been designed to be a “stand alone” option for adding a simple volumetric feeding unit to any process. The VMF-90C is capable of accurately dispensing many common chemicals found in the water and waste water industries, as well as, a host of other industrial chemicals. MADE IN USA.

#### Standard Features

- Rugged, carbon steel construction with corrosion resistant zinc oxide primed, dry powder epoxy coating
- Built-in 1.5 cu. ft. gravity fed hopper with maintenance access hatch and integrated load cell attachment point
- 3/4" Diameter open helix feed screw in 304 stainless steel with “bayonet” style connection
- Standard concentric material conditioning overwind auger
- Standard vibratory agitator mounting bracket
- Water and dust proof NEMA 4X, variable speed motor controller capable of remote installation
- 90 VDC right-angle geared, wash down motor

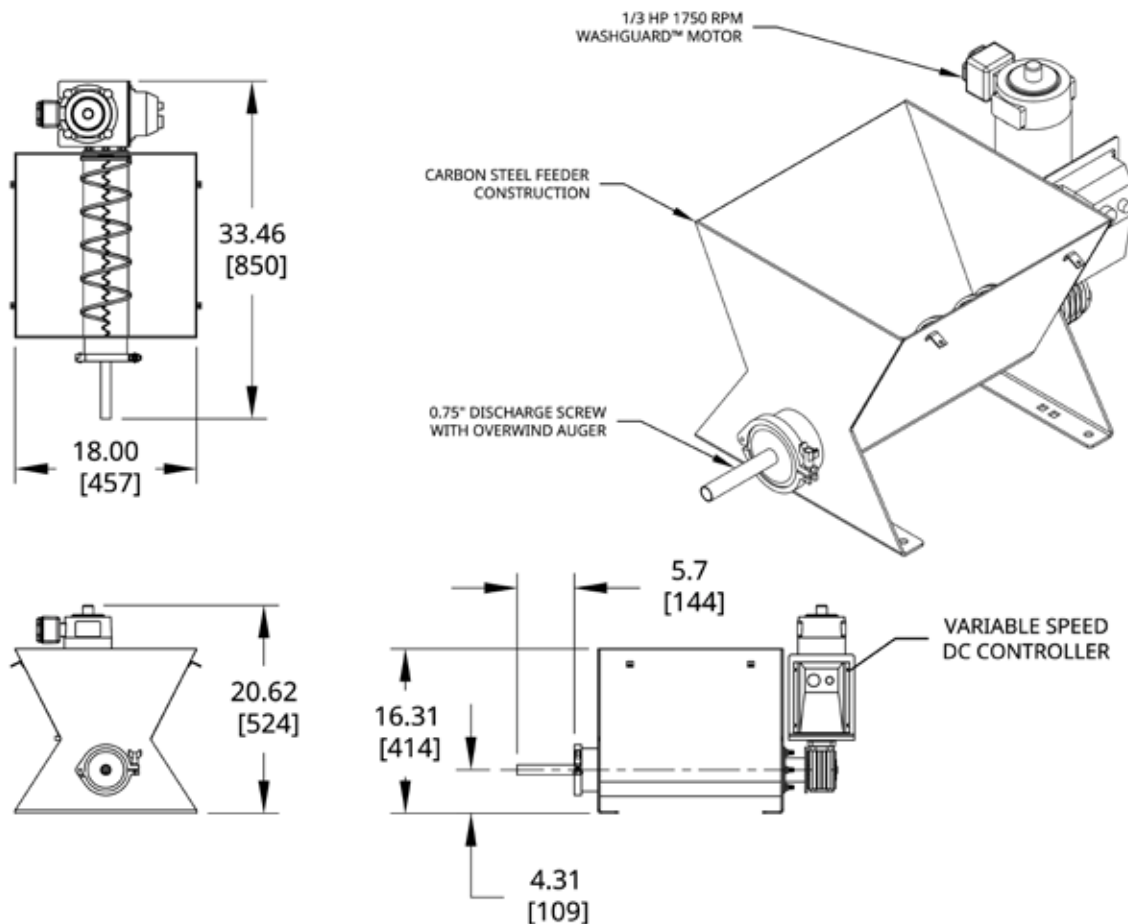
#### Options

- All 304 stainless steel construction
- 316 Stainless steel augers and overwind helix augers
- Electric vibratory agitator
- Lift-off, hinged, clamp-on and adapter lids
- Feeder stands and elevated loading platforms

#### Chemicals

- Feeder and scale are designed to accurately dispense: Aluminum sulfate (alum), calcium hydroxide (hydrated lime), carbon, ferric and ferrous sulfate, magnesium hydroxide, polymers, potassium, soda ash, sodium sulfite and thiosulfate, and other dry powders or pelletized materials

# Model VMF-90C™ Economical Volumetric Screw Feeder Specifications



## General Specifications

PART NUMBER	VMF-90C
Construction	Carbon steel with corrosion resistant zinc oxide primed, dry powder epoxy coating - 304 stainless steel optional
Hopper Capacity	1.5 cu. ft.
Feed Rate	0.13 to 1.27 cu. ft. per hour
Accuracy	1% of volume
Feed Screw	3/4" diameter open helix feed screw in 304 or 316 stainless steel
Overwind Helix	Concentric overwind material conditioning auger in 304 or 316 stainless steel
Controls	Variable speed DC NEMA 4X, SCR motor control capable of remote installation
Control Input	4-20 mA
Motor Type	Right-angle geared, TENV 90 VDC, Washguard® motor 1/3 HP, 83 RPM
Available Motors	None
Vibratory Agitator	Optional electric agitator
Ambient Temperature Limit	10°C - 40°C
Power	115/230 VAC, 50-60 Hz, 4 Amps
Weight	Contact factory