



VMF-90

Volumetric Screw Feeder for Dry Materials



Advantages

- Rugged, corrosion resistant construction
- Heavy duty motor & drive mechanism
- Accurate feed rates up to 50 cu. ft./hr
- Gravimetric feed option
- Multiple control options
- Range of loading configurations
- Basic & pre-packaged systems
- Mixing tanks & wetting cones
- Wide range of accessories
- Quick installation & expert support



Water & Wastewater



Industrial & Chemical



Food Processing

A Better Solution for Dry Material Feeding

Scaleton's VMF-90 Series Volumetric Screw Feeders are rugged, automatic metering screw feeders that are specifically designed for dispensing dry powdered or pelletized materials into a secondary process.

Ideal for Feeding Dry Materials – in a Wide Range of Industries

- Municipal Water
- Wastewater Treatment
- Industrial Process
- Chemical Process
- Food Processing

Rugged Construction – Backed by a Two-Year Warranty

The VMF-90 Series feeders feature rugged construction - either stainless steel or carbon steel protected by a corrosion resistant finish. Augers and piping are all stainless steel.

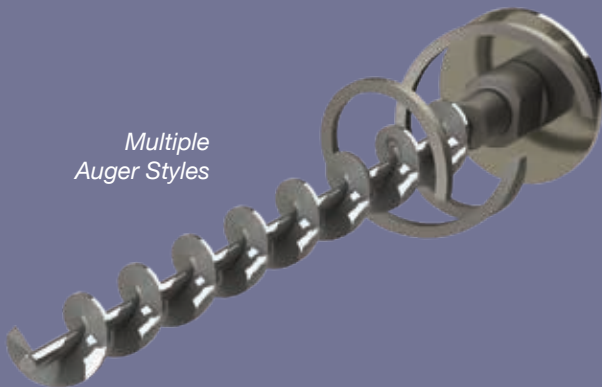


Heavy Duty Motor & Direct Drive Mechanism – for Reliable Operation

The VMF-90 Series employ a right angle drive, variable speed, TENV 90 VDC washdown gear motor with a quick change auger assembly. To meet a range of application requirements, standard motors are available from 1/3 HP to 1.5 HP while optional Washguard® and explosion proof motors are available from 1/3 HP to 1.5 HP.

Choice of Auger Styles – with Feed Rates up to 50 Cubic Feet/Hour

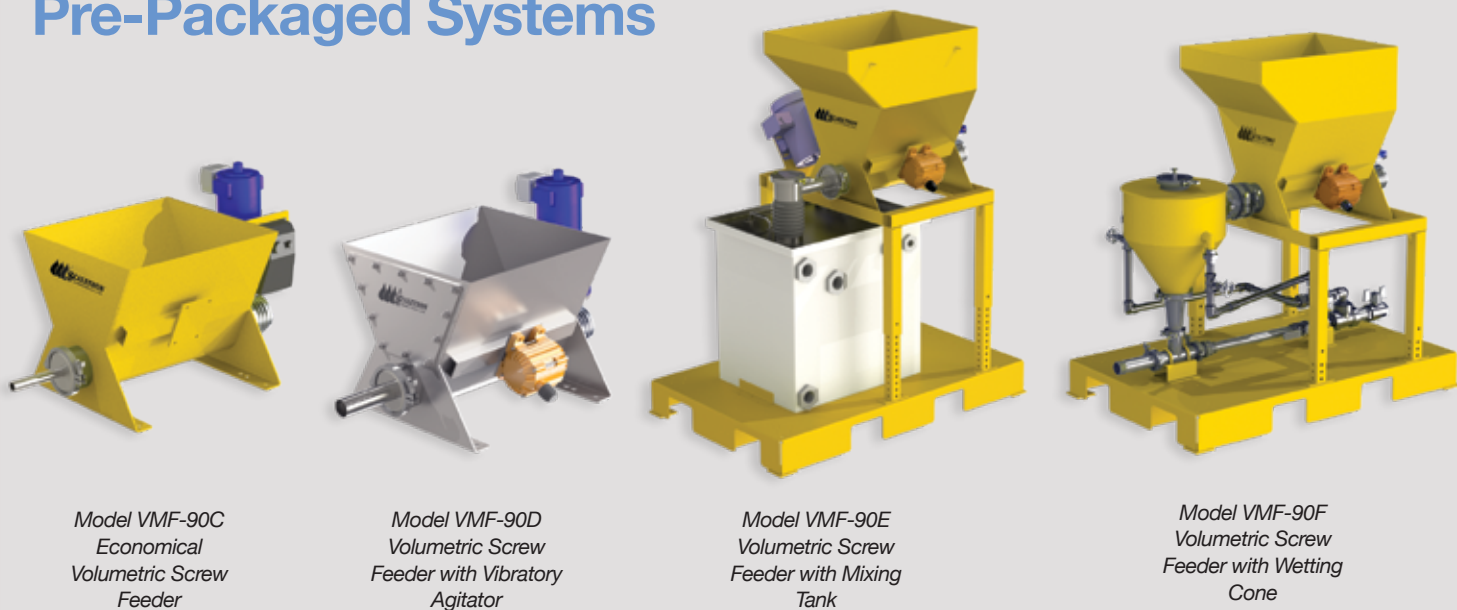
Quick change, concentric helical overwind feed screws are available in rugged 304 or 316 stainless steel as either a 3.75" diameter solid auger or a 0.75" to 1.5" and 3.75" diameter open helix auger.



VMF-90 Basic Unit Features



VMF-90 Pre-Packaged Systems



Gravimetric Feeding – with Integrated “Loss in Weight” System

VMF feeders are available with an integrated scale that allows measurement of dispensed amounts via “loss in weight” providing operators with constant real time assessment of the total mass of additive being used.

Multiple Control Options – for Accurate Feed Rates

A number of control options are available to ensure accurate feed rates resulting 1% or better accuracy. From standard NEMA 4X SCR variable speed controls capable of remote installation to SCADA programmable motor controllers and HMI PLC touch screen interfaces for complete system control, the VMF-90 can be programmed to automatically adjust the feed rates of the material being added.



Variable Speed Control



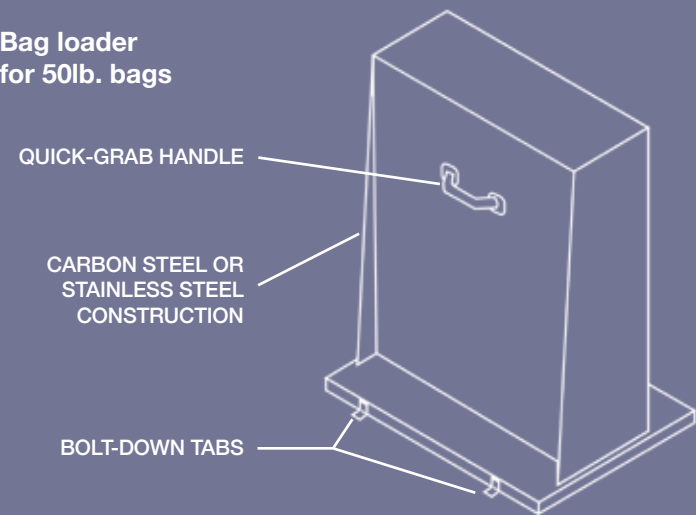
SCADA Motor Controller

A Range of Loading Configurations – to Fit Any Application

Efficient, time-saving material loading options can be added including:

- 50 lb. Bag loaders – to reduce dust
- 50 lb. Glove box bag loaders – fully sealed to eliminate dust
- FIBC bulk bag (super sack) unloaders – hoist or fork lift style
- Direct feed from silos – for large scale operations

Bag loader for 50lb. bags



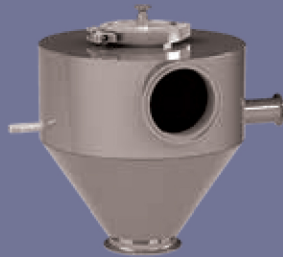
Additional Features & Benefits

Mixing Tanks & Wetting Cones – to Create Any Solution

Scaleton offers mixing tanks from 35 to 100 gallons and wetting cones to produce solutions or slurries by mixing dry chemicals, food additives and other materials with water.



Mixing Tanks



Wetting Cones

Wide Range of Options & Accessories – to Accommodate Diverse Materials

Accessories for the VMF are designed to enable efficient and accurate processing of dry materials from powders to pellets and include:

- Discharge spouts & eductors
- Vibratory agitators
- Particle crushers
- Dust collectors
- Lift-off, hinged or fixed lids for hopper
- Hopper extensions for additional capacity
- Base stands and elevated loading platforms



Multiple Discharge Spout Styles



Mixing Eductors



Loading Platforms



Particle Crushers

Quick Installation – with Fully Configured Systems

Installation is a breeze as VMF systems are shipped fully configured for each specific application and ready to use. We stand by ready to assist our local distributor and you through the entire process.

Expert Knowledge & Support – We'll Help You Every Step of the Way

At Scaleton, we are experts in providing solutions for the weighing and feeding of chemicals and other dry powdered materials. Our sales engineers and distributors have a wide range of experience in all types of applications and can help identify the right system to improve your operations.

Basic Unit Specifications

Hopper Capacity:	1.5 to 3.6 cu. ft. – hopper extensions available
Feed Rate:	0.07 to 50.0 cu. ft. per hour – custom sizes available
Feed Screw:	0.50", 0.75" to 3.75" diameter solid auger or 0.75" to 3.75" diameter open helix auger in 304 or 316 stainless steel – custom sizes available
Overwind Helix:	304 or 316 stainless steel
Controls:	Variable speed DC NEMA 4X SCR motor control (SCADA programmable and HMI PLC touch screen controllers available)
Control Input:	4-20 mA
Motor Type:	Right angle, TENV 90 VDC, wash down gearmotor - 1/3 HP to 1.5 HP, 1750 RPM
Available Motors:	Washguard® - 1/3 HP to 1.5 HP motor and gearing Explosion proof - 1/3 HP to 1.5 HP motor and gearing
Ambient Temp. Limit:	10°C - 40°C
Power:	115 VAC, 50-60 Hz, 4 Amps



Scaleton Industries, Ltd.
Bedminster Industrial Park
53 Appletree Lane,
P.O. Box 365
Plumsteadville, PA 18949 USA

Toll Free: 1-800-257-5911 (USA & Canada)
Phone: (+1) 215-766-2670 (International)
Fax: (+1) 215-766-2672
info@scaletonscales.com
www.scaletonscales.com