

Model 4010™ Day Tank Scale (PN: 4010- (enter size of base) – (enter net capacity in LB or KG):

The Model 4010™ Tank Scale is assembled and calibrated to the digital controller at the factory, then partially disassembled for shipment.

Assembly and Start Up Instructions:

Before assembly, take note of the scale base and indicator serial numbers. The scale base and indicator serial numbers must match each other for proper operation! If configured with dual channel indicator: Ch 1 = blue heat shrink tubing, Ch 2 = yellow heat shrink tubing. Refer to controller installation instructions for guidance on wiring. Do not loosen or move load cell.

Set up and Wiring:

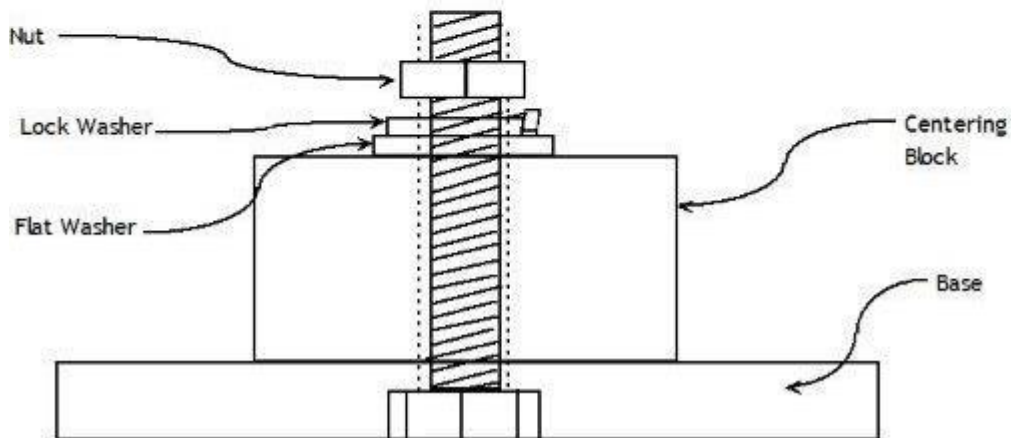
Step 1: Remove all parts from box and inspect for damage – bent metal, broken wires, cracks in indicator, etc. Any shipping damage must be reported **to carrier!**

Parts Bag Contains: (strapped to scale base)

- 4) PVC Centering Blocks and mounting hardware
- 3) leveling feet w/ jam nuts

Step 2: Install centering blocks following below instructions:

1. Remove contents from bag. You will have parts to make (4) sets of centering blocks per base.
2. Assemble as shown, starting by inserting the bolt up through the underneath of the base in a slot. The head of the bolt will slide in slot under base.
3. Install one block on the bolt, then flat washer, then lock washer and finally a nut. Hand tighten.
4. Knowing the diameter of the tank, position blocks to center your tank on base.
5. Tighten bolt to secure block against the tank for support.



Step 3: Install Leveling feet. **The leveling feet have been removed for shipping to prevent damage or loss.**

You must install these feet into the base before placing base right-side-up. Feet (foot) should be screwed into place (corners of base and/or load cell). Make sure the nut is far enough down on the foot so that you can screw the foot into the base, and then use the feet to level the base on the floor. Screw feet in as far as possible, then back out to level scale frame. When this is accomplished, tighten the nut on the foot against the base, and this will stabilize the feet.



Technical Assistance: (800)257-5911 or (215)766-2670

Email: info@scaletonscales.com

Step 4: Place the scale on a solid, dry, and even surface. Clear the area of all debris where the scale base will be anchored. **LEVEL THE BASE.** Failure to level the base will result with inaccurate readings. The “foot” that is in the load cell is adjustable with a nut to tighten. Level the base by adjusting this foot, and then use the nut to tighten the foot so that it cannot move.

Step 5: If conduit is to be used, we recommend at least 2 feet of horizontally mounted, FLEXIBLE conduit as to not interfere with free movement of the base for accurate measurement. Feed the wire up through the conduit, and apply a fitting. ©2021 Scaleton Industries Ltd., Plumsteadville, PA Scaleton, PRINTED IN THE U.S.A. January 2021.

Technical Assistance: (800)257-5911 or (215)766-2670 **Email:** info@scaletonscales.com

*****See controller manual for rest of set-up and operating instructions.*****

Replacement Parts:

PN: **SB/SS-** (enter load cell value) –**LC** : replacement load cell & shim

PN: **4010LF** : leveling foot & jam nut for Model 4010 scale base

PN: **4010CB** : 4010 PVC centering blocks