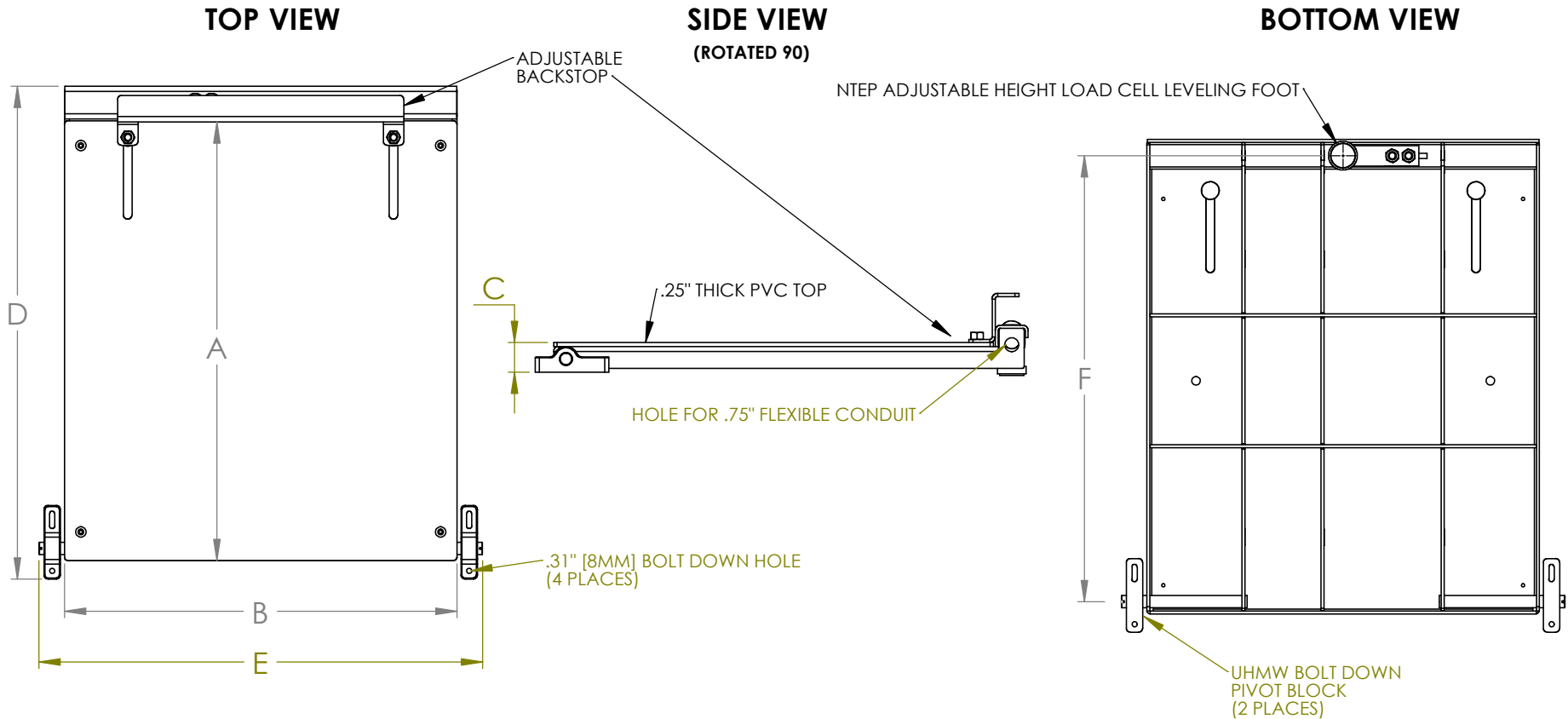


| MODEL | A Max | B | C | D | E | F | NET CAPACITY LB/KG | | | |
|---------------|--------------|-------------|------------|--------------|--------------|--------------|--------------------|-------------|-------------|--------------|
| 4021-18-_____ | 20.07"/510mm | 18"/457mm | 1.81"/46mm | 23.39"/594mm | 21.12"/536mm | 20.46"/520mm | 100LB/45KG | 200LB/91KG | 300LB/136KG | 400LB/181KG |
| 4021-26-_____ | 26.82"/681mm | 24.0"/610mm | 1.81"/46mm | 30.14"/765mm | 27.12"/689mm | 27.26"/692mm | 400LB/181KG | 600LB/272KG | 800LB/363KG | 1000LB/454KG |

(EX: 4021-18-100LB OR 4021-18-45KG)



NOTES:
STANDARD CONSTRUCTION:
POWDER COATED STEEL
1/4"/6.35mm PVC DECK
20'/6.1M LENGTH OF WIRE
18" BASE FOR CYLINDERS 12-18"
26" BASE FOR CYLINDERS 18-26"

REV A: CORRECTED 4021-26 DIMENSIONS D AND F 8/13/25
REV B: CORRECTED 4021-18 DIMENSIONS A AND D 2/6/26



53 Appletree Lane
P.O. Box 365
Plumsteadville, PA 18949
Toll Free: (800) 257-5911
Phone: (215) 766-2670
Fax: (215) 766-2672
E-Mail: info@scaletronscales.com
Website: www.scaletronscales.com

NOTICE

THE INFORMATION CONTAINED IN THIS DRAWING IS THE SOLE PROPERTY OF SCALETRON INDUSTRIES LTD. ANY REPRODUCTION IN PART OR AS A WHOLE WITHOUT THE WRITTEN PERMISSION OF SCALETRON INDUSTRIES LTD IS PROHIBITED.

MODEL 4021
ULTRA LOW PROFILE SCALE

REV
B

CBC 8/10/2021